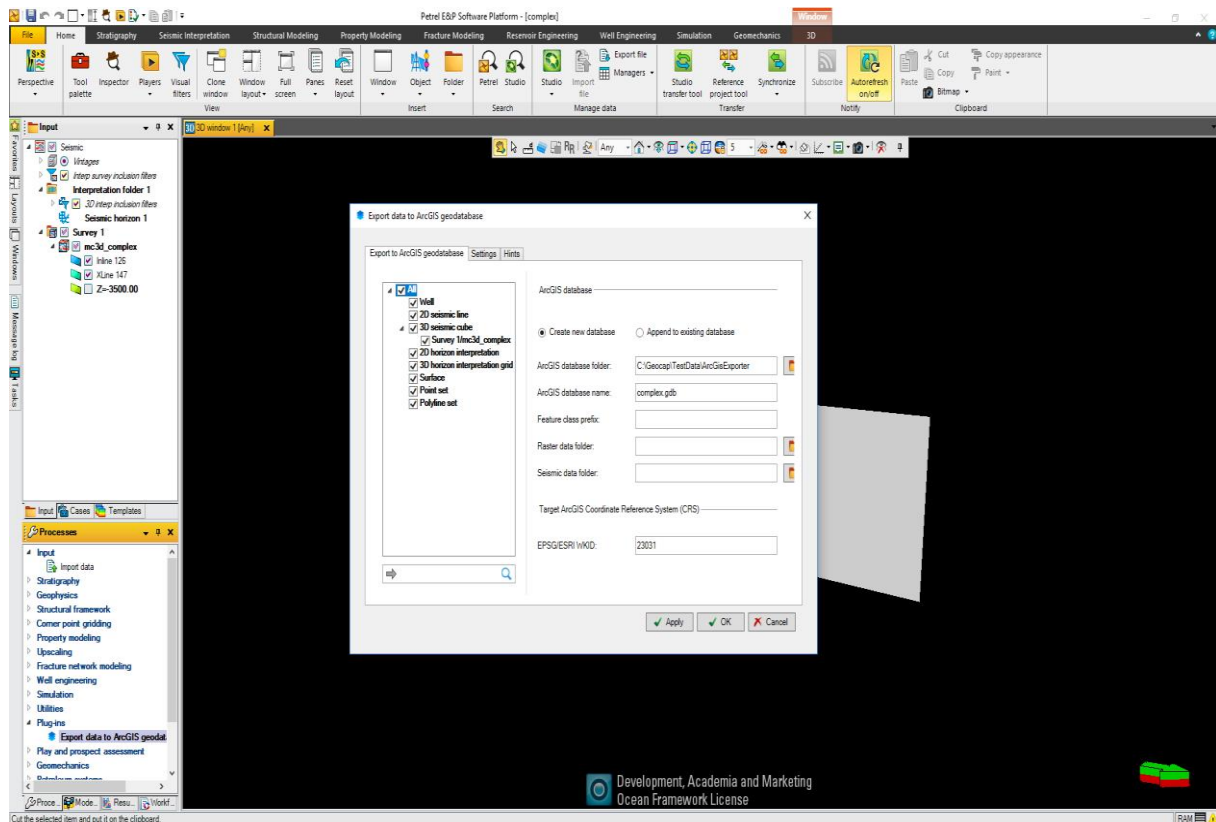


GIS® Data Link for Petrel® 2020

Users' Guide

Geocap AS



ArcGIS® is mark of ESRI.

Petrel® is mark of Schlumberger

GIS DATA LINK is mark of Geocap AS

COPYRIGHT NOTICES AND DISCLAIMERS

GIS Data Link® for Petrel® for Petrel 2020, Copyright © 2020 Geocap AS. All rights reserved. No part of this user documentation may be reproduced, stored in a retrieval system, or translated in any form or by any means, electronic or mechanical, including photocopying and recording, without prior written permission of Geocap AS, Schweigaardsgate 28, OSLO, Norway.

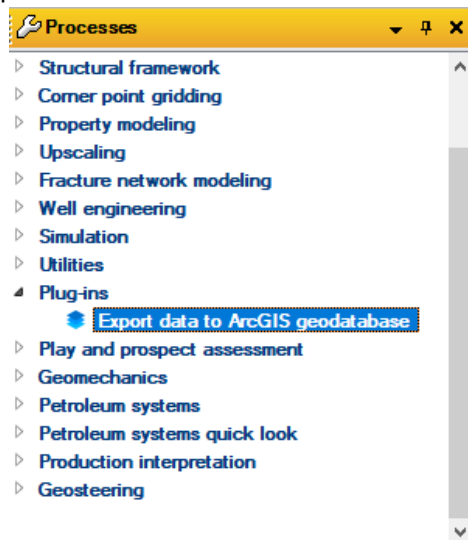
INSTALLATION

To install GIS DATA LINK, launch Petrel 2020, File -> Options, click on **Plug-in Manager**. Click the Install plug-in button and select the Geocap.Petrel.ArcGis.pip file. The plug-in will be installed, but before you can use it you must exit and then restart Petrel.

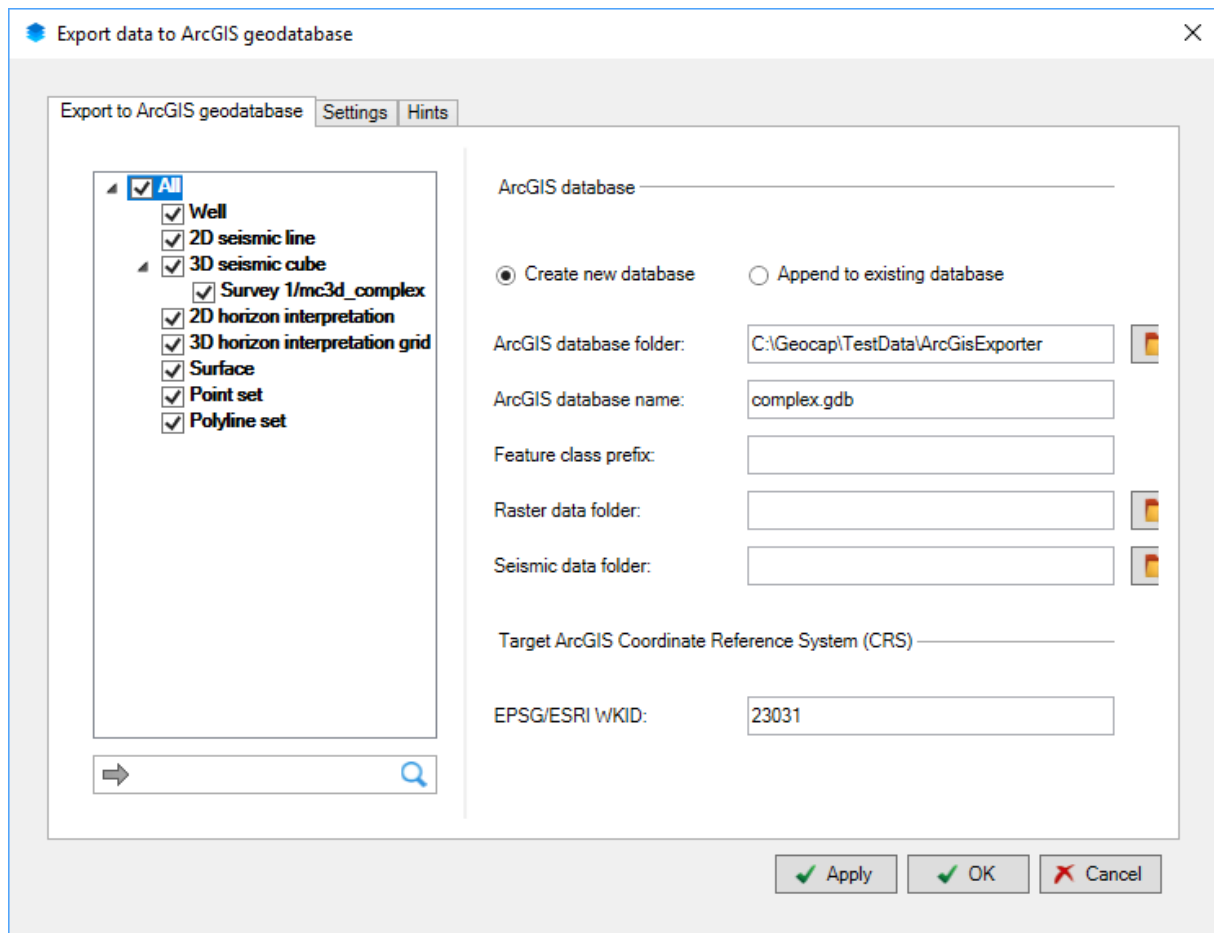
Once the plug-in has been installed it will appear in the list of features available in Petrel's license package dialog (figure 1). If no favorite package has been selected then the license package dialog will be shown when Petrel is launched, or it may be displayed by selecting "License packages" from Petrel's Help menu. If you select the license from within Petrel you must exit and restart Petrel in order for the change to take effect. When Petrel is launched, GIS DATA LINK will appear in Petrel's process pane under the plug-ins, and as a workstep in Petrel's Workflow editor under the list of Well Engineerings.

GETTING STARTED: CREATING YOUR FIRST POWERPOINT CREATOR PRESENTATION

To export dataset in Petrel to new ArcGIS file geodatabase, open the dialog from the Petrel Process



pane.

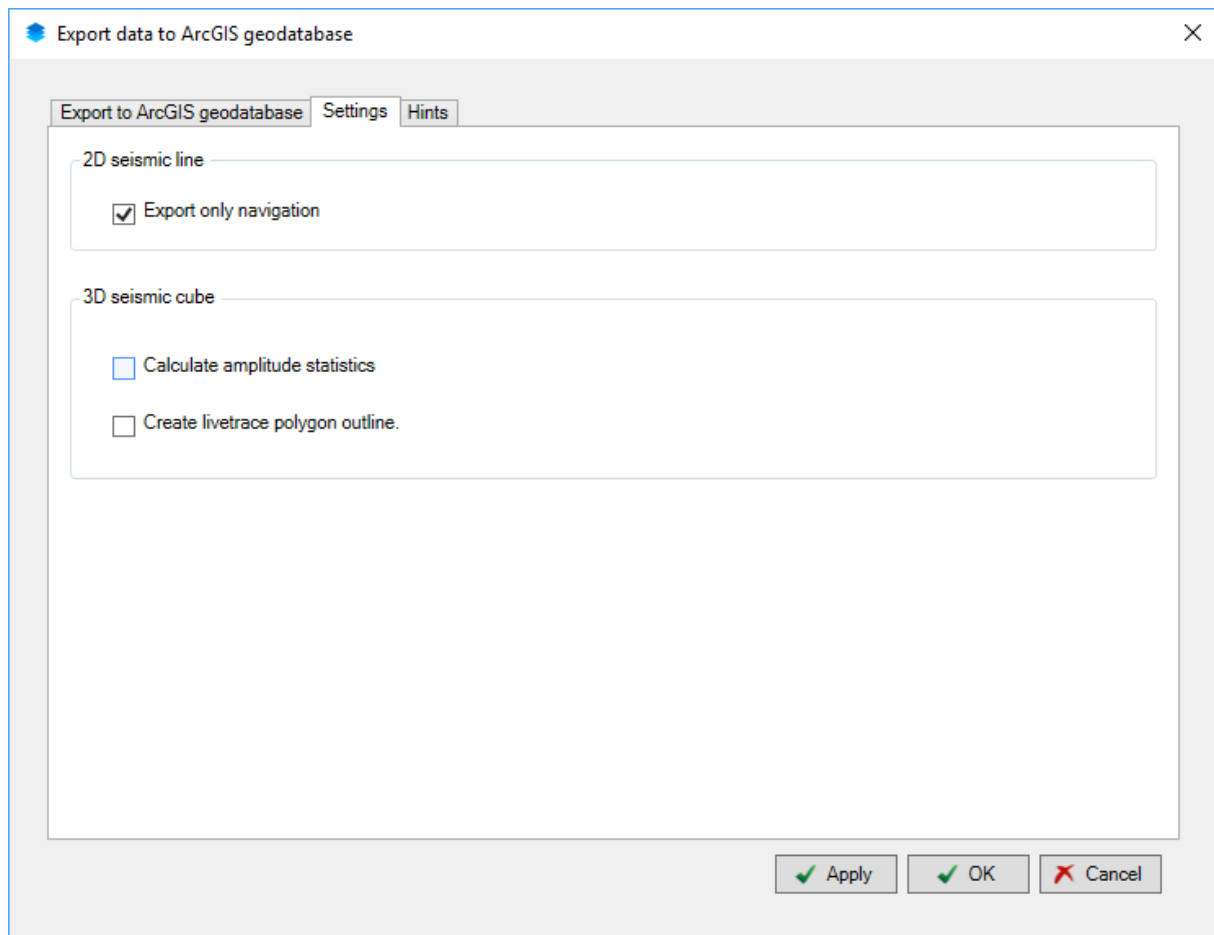


ESRI/EPG WKID will be read from Petrel project.

Select the data types which you would like to export into ESRI file Geodatabase, choose “Create new database”, choose the folder for storing the database, input the database name, select the raster data folder and seismic data folder (if seismic 2d/3d data types are selected) and then click Apply. The will convert the selected data into ArcGIS format and store them into the database.

If “Append to existing database” is chosen, the data selected will be exported to the existing database.

Export Options Settings



2D seismic line

2D seismic line

☒ Export only navigation

If selected, only the navigation geometry will be written to ESRI File Geodatabase. If not, the seismic 2d lines will be exported to the raster folder in tiff format.

3D seismic cube

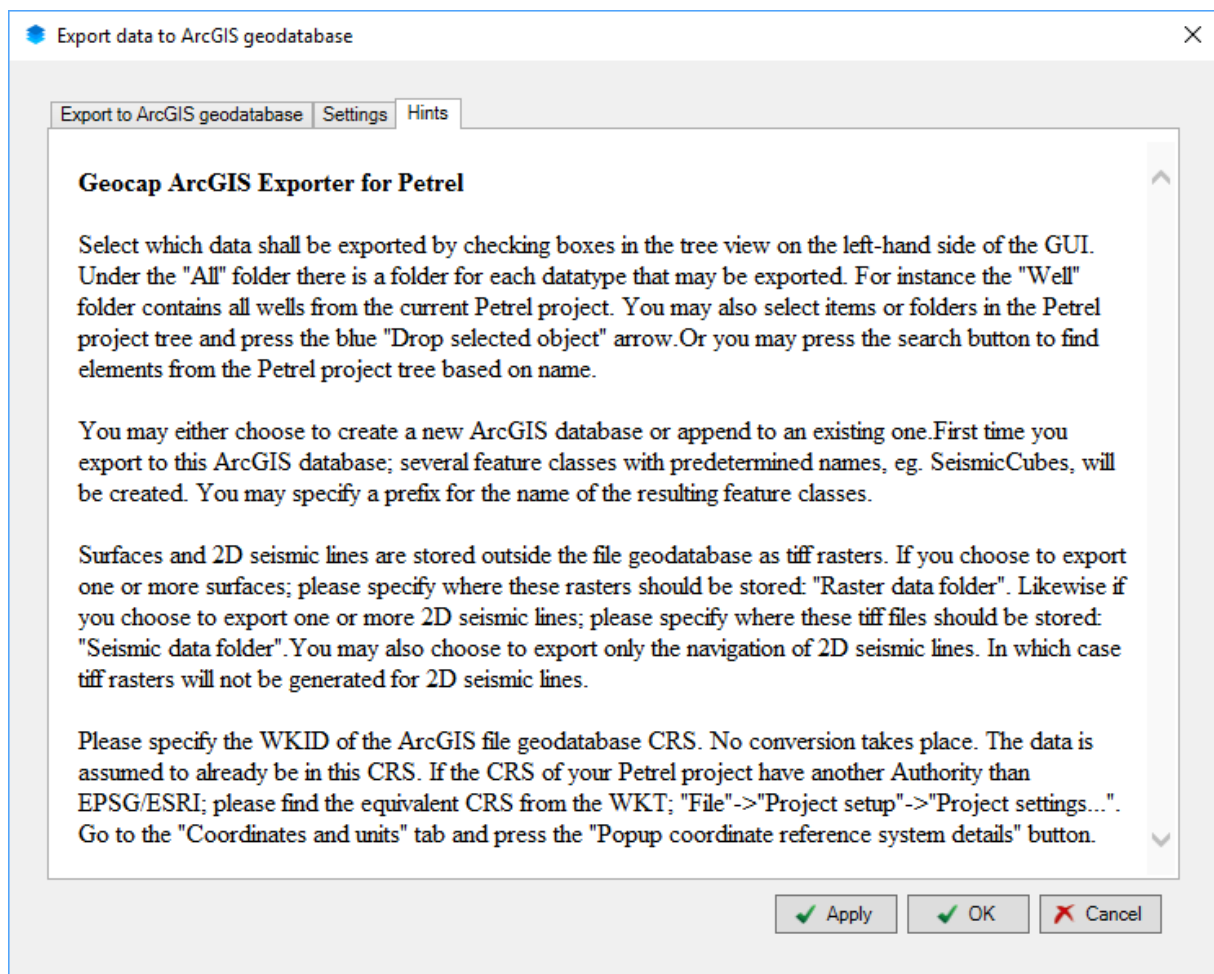
☐ Calculate amplitude statistics

If selected, the amplitude statistics will be scanned and written to ESRI File Geodatabase as fields.

☐ Create livetrace polygon outline.

If selected, the live traces outline from seismic cube will be calculated and exported into ESRI File Geodatabase. If not, only the cube geometry will be exported. The live traces outline calculation will take some times depends on the size of the cube.

Hints



USING GIS DATA LINK IN A WORKFLOW

When running in a workflow, all the same options described above are available.

The workflow step only support creating new ESRI File Geodatabase.

Note: Be sure to click the Apply button in the Workflow editor or else Petrel will not save the workflow when saving the project.

